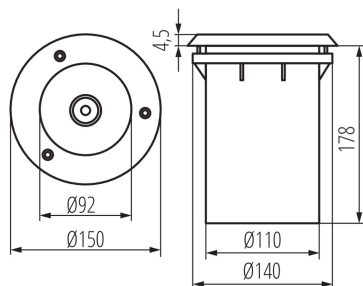


In-ground lighting fitting

5905339071958



Kanlux XARD ground recessed luminaire is characterised by the highest level of resistance to mechanical damage - the so-called “vandal-resistance” - IK10. Add to this a high rating of tightness (IP67) and we get a luminaire which is a great solution for lighting facades of buildings, squares, terraces, parks, paths, passages, driveways, stairs, etc.

GENERAL DATA:

Colour: stainless steel
Place of assembly: In the ground
Place of application: Indoors and outdoors
Minimum distance from the illuminated object: 0,5m
Replaceable light source: yes
Light source included: no
Fixture lighting direction: Top
Height [mm]: 183
Diameter [mm]: 150
Wire length [m]: 0.22
Number of chokes: 1

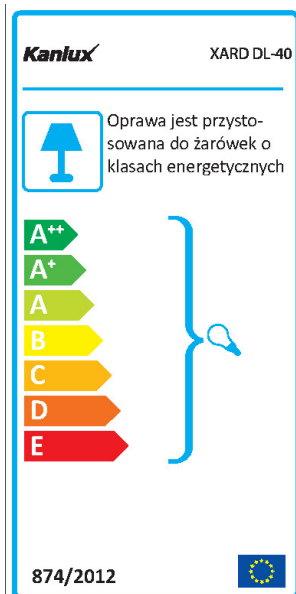
TECHNICAL DATA:

Rated voltage [V]: 220-240 AC
Rated frequency [Hz]: 50/60
Maximum power [W]: max 40
Class of protection against electric shock: I
Light source: A60
Cap: E27
Ambient temperature range to which the product can be exposed: -20÷35
The fixture is adapted to the light sources of the following energy classes: A++,A+,A,B,C,D,E
Enclosure material: aluminum alloy
Panel/frame material: stainless steel
Protective glass material: Tempered glass
Connection type: Free cable ends
Wire diameter [mm²]: 1
Permissible static pressure [kN]: 20
IK class: 10
IP class: 67

LOGISTIC DATA:

Unit of measurement: unit
Packaging method: 6
Number of units in the packaging: 6
Net unit weight [g]: 1120

In-ground lighting fitting



Grammage [g]: 1366.67

Length of a unit pack [cm]: 15.5

Width of a unit pack [cm]: 15.5

Height of a unit pack [cm]: 20

Weight of a cardboard box [kg]: 8.20002

Width of a cardboard box [cm]: 16.5

Height of a cardboard box [cm]: 42.5

Length of a cardboard box [cm]: 47

Volume of a cardboard box [m³]: 0.032959

ADDITIONAL INFORMATION:

- Junction box included
- total light source length max 110 mm

KANLUX S.A. (kat 7195) XARD DL-40 / Krzywa rozsyłu światła (biegunowo)

Oprawa: KANLUX S.A. (kat 7195) XARD DL-40
Lampy: 1 x TC-QSE 18W/827

