

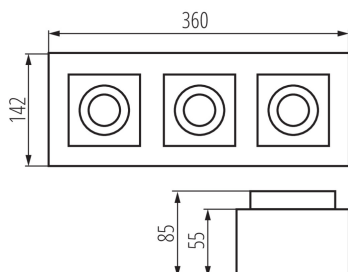
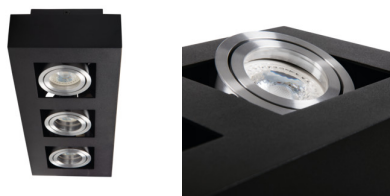
Ceiling-mounted spotlight fitting

5905339268341



MODERN
design

HIGH
quality
finish



The Kanlux STOBI is the line of ceiling fixtures, with a replaceable light source. They are in aluminium with a fully adjustable light-beam angle. The high-quality finish (matte, sanded surface), and simple style, make the fixtures perfect for rooms at home, and also for offices and apartments.

GENERAL DATA:

Colour: black

Place of assembly: ceiling mounted

Place of application: Indoors

Minimum distance from the illuminated object: 0,5m

Replaceable light source: yes

The product is not suitable to be covered with a heat-insulating material: yes

Light source included: no

Length [mm]: 360

Width [mm]: 142

Height [mm]: 85

TECHNICAL DATA:

Rated voltage [V]: 220-240 AC

Rated frequency [Hz]: 50/60

Maximum power [W]: 3 x max 25

Class of protection against electric shock: I

Light source: PAR16

Cap: GU10

Ambient temperature range to which the product can be exposed: 5÷25

The fixture is adapted to the light sources of the following energy classes: A++,A+,A,B,C,D,E

Enclosure material: aluminum alloy

Connection type: Bolt terminal block

Range of sections of wires used [mm²]: 1÷2,5

Lighting-fixture angle regulation: in two axes

Lighting-fixture angle regulation [°]: 65/45

IP class: 20

LOGISTIC DATA:

Unit of measurement: unit

Packaging method: 6

Number of units in the secondary packaging: 1

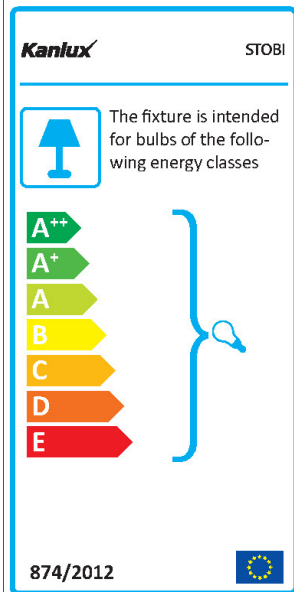
Number of units in the packaging: 6

Net unit weight [g]: 1320

Grammage [g]: 1525

Length of a unit pack [cm]: 37

Ceiling-mounted spotlight fitting



Width of a unit pack [cm]: 15
Height of a unit pack [cm]: 9.5
Weight of a cardboard box [kg]: 9.15
Width of a cardboard box [cm]: 32
Height of a cardboard box [cm]: 30.5
Length of a cardboard box [cm] : 38.5
Volume of a cardboard box [m³]: 0.037576

