



# ISOLED<sup>®</sup>

CUSTOMISED LIGHT SOLUTIONS

## 2022 Infrared incl. illuminated frame

[WWW.ISOLED.SHOP](http://WWW.ISOLED.SHOP) | [WWW.ISOLED.CH](http://WWW.ISOLED.CH)





## TABLE OF CONTENTS

<b>3</b>	Infrared heat - nature and us	<b>18</b>	Smartline
<b>4</b>	ICONIC - The next generation of heating	<b>20</b>	Mounting system
<b>5</b>	Mode of action	<b>22</b>	LED light frame
<b>6</b>	Advantages	<b>24</b>	Mounting LED light frame
<b>7</b>	Overview	<b>26</b>	Accessories - Towel dryer & feet
<b>8</b>	ICONIC Classic	<b>27</b>	Picture gallery
<b>10</b>	ICONIC picture heater	<b>32</b>	Control systems
<b>12</b>	ICONIC glass picture heater	<b>34</b>	Legend
<b>14</b>	ICONIC mirror heater		
<b>16</b>	ICONIC decorative glass heater		

## STATE OF THE ART LED LIGHTING FOR INFRARED HEATERS

Our company consists of competent specialist lateral thinkers and motivated doers, who continuously drive forwards the technical developments in LED technology and set new accents and trends with their innovative ideas and solutions.

Since 2008, we have been offering our customers and partners a standardised LED product range with well over 2,450 articles, intelligent LED project lighting solutions as well as customised production of sustainable LED lighting solutions according to individual specifications. In the design of our wide range of products and services, we are guided by the needs of our customers

- » Requirements of our customers as well as on the
- » technical progress of LED technology.

Excellent quality, highly competent advice from our staff, as well as sustainable growth of our company make sure our partners can reliably cover their needs with the latest LED lighting components and systems.

This year we have enriched our range with brand new, high-quality ICONIC infrared heaters. This product line not only meets the requirements of a sustainable and innovative heating system, but also creates a pleasant light exactly where you need it with the help of the matching LED light frames. The numerous advantages of infrared heaters when used as a preferred heating system are as versatile as their areas of application and design options.

Dear ladies and gentlemen, dear customers and interested parties !

In the middle of the second Corona year 2021, our new catalog 2022 is published with about 2,450 products, of which almost 450 are new.

Even if significant relief takes effect, we do not know whether the decline of the pandemic is a summer effect or not. The pandemic continues to dominate our lives and our work. It is not foreseeable when we will fully regain our accustomed lives and the freedoms that go with them.

**„Attitude is a little thing that makes a big difference“**

Winston Churchill (1874 - 1965)

We quickly learn to deal with and adjust to bumps in the road. In this way, we managed to master the challenges that we had in 2020 and to date very well and to continue on our growth path.

The development of the global economy and the economic upswing, which has occurred with a time lag and in different regions, has certainly led to considerable changes on the world market.

The countries in the Far East (especially China) have quickly overcome the effects of the pandemic (still in 2020) through rigorous measures and massive restrictions (personal/economic) and were subsequently able to quickly return to their growth path. Economic growth in these regions, which was already significantly stronger than in Europe before the pandemic (approx. 4.5 - 6.5 %), has already accelerated in the second half of 2020 and is now in full swing (unofficially expected to be approx. 8-10 % in 2021), which is significantly higher than before.

This, combined with economic support measures or aid packages that are underway or have been launched in Europe, is now essentially leading to considerable difficulties in the supply of raw materials and in international freight traffic.

Raw material prices have risen by 30-60%, freight costs by up to 400% (sea freight/ costs for containers) and certain components are currently not available or can only be procured at massively increased prices. The scarcity of resources not only affects components, but also freight capacities from the Far East to Europe.

For the first time in years, we were unable to cushion the price increases from our suppliers and our logistics partners through our growth (higher purchasing volume, longer-term purchase agreements and disposition, pre-financing of components, etc.) and our intensive partnerships and we had to adjust our prices in mid-July 2021.

In this way, we ensure:

- » continued highest availability
- » Top quality
- » sustainable range
- » long-term and stable partnerships



**Ing. Hacadur Otyan**  
CEO | Chairman of the board (founder)

The management of the pandemic as well as the additional growth of over 20% from 2019 to 2020 showed that we are a "fit" company with a powerful and adaptable organization and top motivated employees.

Moreover, we operate in an industry that is not one of the victims of this crisis.

We continue to observe the current development with caution and care in order to be able to continue to actively shape our actions. An ongoing observation of the current situation as well as a constant readiness to react accordingly to changes (Corona-related as well as market-related) are now constant companions in our ongoing work.

Many thanks to our employees! Who have helped to shape everything, who have supported everything and who have given their best.

We cannot appreciate enough your dedication, trust and loyalty during this extraordinary time.

Many thanks to our customers and partners! Who, despite the uncertainty, have pushed and further expanded the cooperation and remain loyal to us.

Their confidence in our ability to deliver, competencies, products and services have sustained our business operations without interruption.

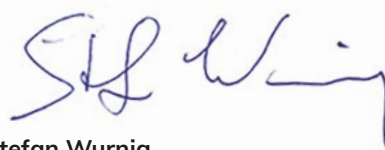
Our plans for the future remain ambitious and growth-oriented. Based on our core values - sustainability - loyalty - trust - we will invest further steps in the intensive expansion of market cultivation in the DACH region, expand our sales throughout Europe and further develop our order-oriented production.

In addition, we will deepen our industry and target group approach!

We continue to grow! In the first half of 2021, we were able to continue our growth course (again a + of 20%), which is why we are strengthening our existing team of over 140 employees in all areas - with a focus on sales and customer service - with additional competent employees.

Furthermore, we are intensifying our training and further education measures in order to be able to advise our customers even better, more individually and in a more targeted manner.

We wish you, your employees and families good health and a good business year.



**Mag. Stefan Wurnig**  
CTO | Management Technology (founder)

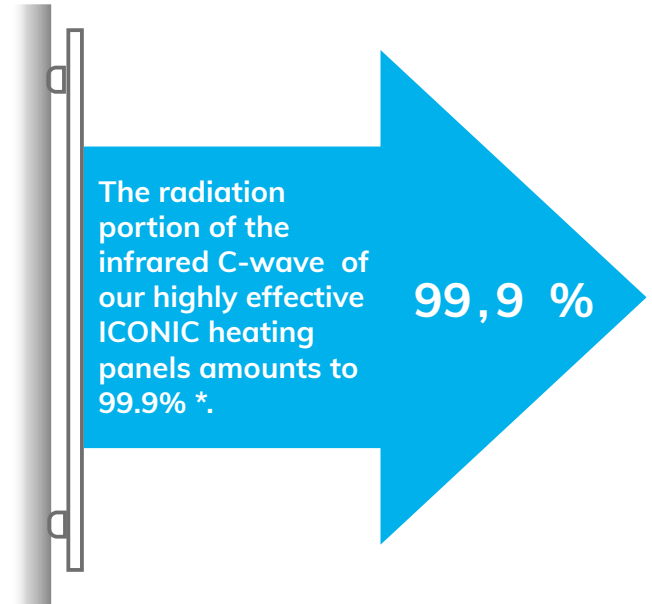


# ICONIC - THE NEXT GENERATION OF HEATING

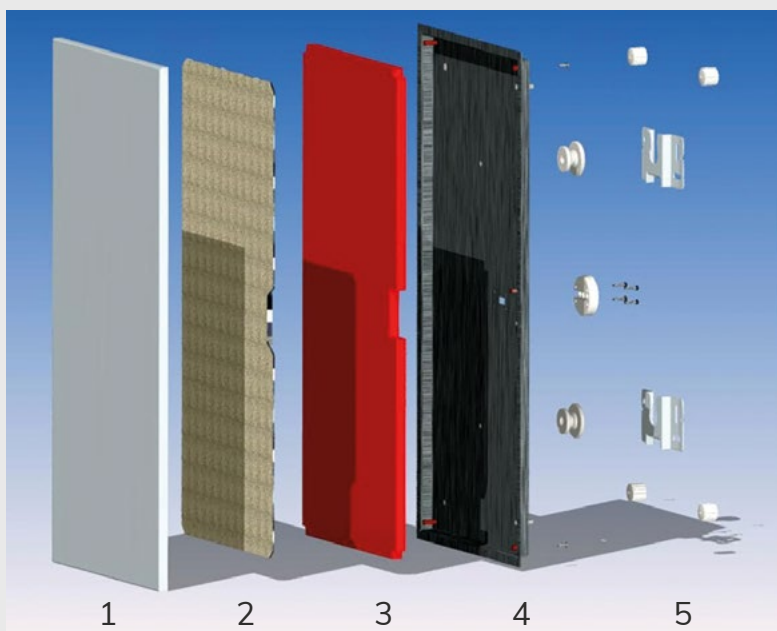
## Technology made in Austria

Developed and produced in cooperation with our partner company Koller, our new product generation ICONIC achieves a significantly higher radiation efficiency compared to other infrared heating suppliers. This extraordinary result is made possible by an infrared ray reflecting insulation exclusively developed for our new infrared panels as well as a special powder coating with a now even higher emissivity of 0.96\*. The resulting high efficiency leads to lower power consumption and shortens the average running time per day, so that your heating costs are reduced accordingly.

\*Source: Study of the Technical University of Stuttgart on radiation efficiency measurement (06/2016)



In addition, our ICONIC panels generate a radiation proportion of infrared C-waves of 99.9 %\*. In addition to the radiation percentage, the radiation-efficiency of an IR heater is the most important factor for its efficiency. This should be at least 70 % for very good IR heaters. The radiation efficiency of our ICONIC panels is 71%\*, which makes ICONIC IR heaters one of the highest radiation efficiencies on the market today. All this has been confirmed in a study by the Technical University of Stuttgart.



## Structure of the new ICONIC heating panels

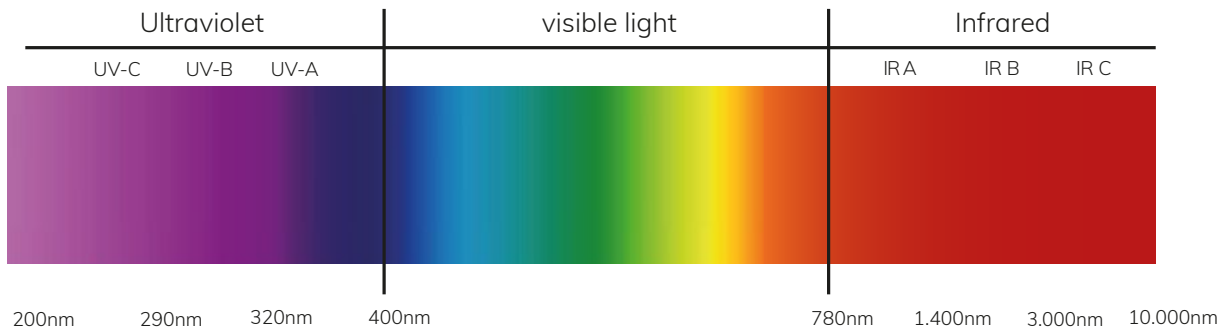
1. Coated steel front with high IR radiation factor and high UV resistance
2. High quality heating element with constantan heating conductor
3. Thermal insulation with IR reflector
4. Coated solid steel back panel
5. Stable and flexible adjustable suspension device

# THE MODE OF ACTION OF INFRARED HEATERS

Infrared radiation is widespread in nature: The rays of the sun or a pleasantly crackling fireplace are natural sources of infrared radiation. Almost 50% of the solar radiation that reaches the ground is infrared radiation. This is responsible for our feeling of warmth when we are in the sun, so that we can experience sunbathing in the warmth of the sun as pleasantly relaxing. However, infrared radiation has nothing to do with the sun's harmful UV rays, which are among the remaining 50% of the sun's radiation that is visible to us and which we call 'light'.

Open fire also emits infrared radiation for the most part, which causes its warming effect.

Infrared radiation and its warming properties were discovered as early as 1800 by the German-British astronomer, technician and musician Friedrich Wilhelm Herschel. At that time, he tried to measure the temperature of the different colors of sunlight and found that the largest proportion of heat results from radiation in the infrared range.



<b>Infrared</b>	780 nm	in the spectral range between visible light and the longer wavelength terahertz radiation	Frequency range from 300 GHz to 400 THz
-----------------	--------	---	---

## How does an IR heater work

An IR heater does not heat the air as with conventional heating systems, but the walls and all objects and people in the room. The infrared radiation stored in the walls and furniture is then evenly radiated as gentle heat. This is a completely natural process - similar to the way a tiled stove works or the way the sun warms up the floor and body when you sunbathe. The heat waves generated in this way also have hardly any effect on the

air movement and ensure a constant, pleasant humidity. The air thus remains fresh and dust-free and even ventilating the room has no negative effect on the heating effect. Moreover, infrared heat is perceived more intensively due to its direct effect - up to 2° to 3° C warmer than with conventional convection heating systems.

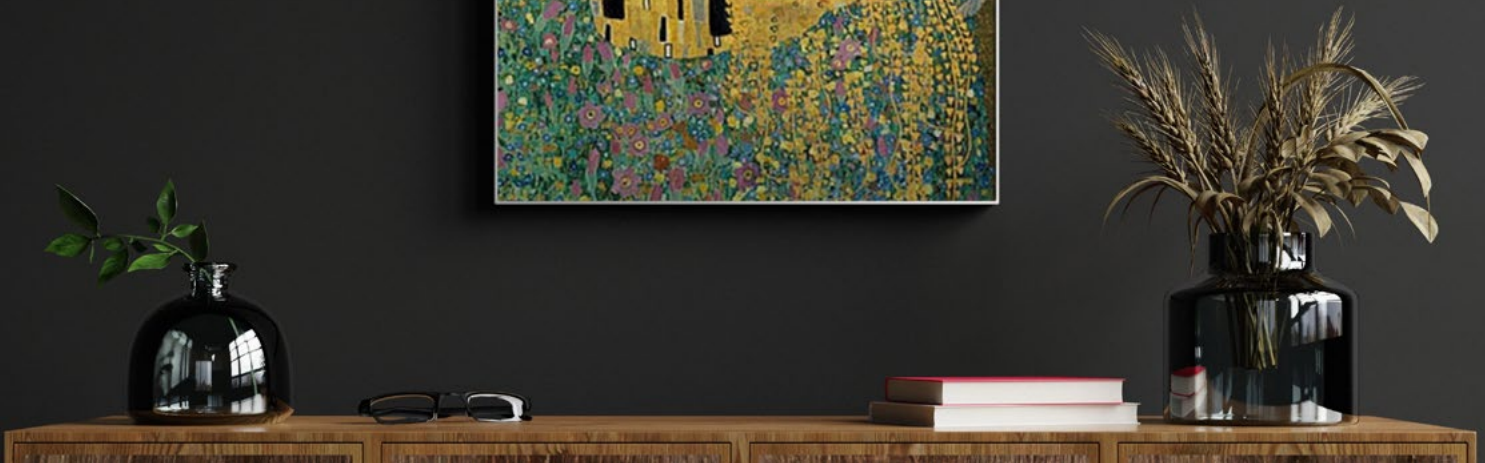


Inefficient heat distribution when using convection heating



Efficient heat distribution when using infrared heating

# ADVANTAGES OF INFRARED HEATING



**LOW  
INVESTMENT COSTS**



**NO MAINTENANCE  
COSTS**



**FLEXIBLE AND  
SPACE-SAVING USE**



**PLEASANT  
INDOOR CLIMATE**



**FIGHTS AND PREVENTS  
MOULD GROWTH**



**INDIVIDUAL DESIGN**



**SIMPLE SELF-  
ASSEMBLY**



**ALMOST NO AIR AND  
DUST TURBULENCE**



# OVERVIEW



## PAGE 8 ICONIC Classic

**ALSO AVAILABLE IN RAL COLORS**



**YES** LED light frame



**NO** frame



**NO** printed



## PAGE 10 Image heating

**INDIVIDUAL DESIGN THROUGH PRINT MOTIF**



**YES** LED light frame



**YES** frame



**YES** printed



## PAGE 12 glass picture heating

**GLAMOROUS DESIGN ACCENT | INDIVIDUAL PRINT MOTIF**



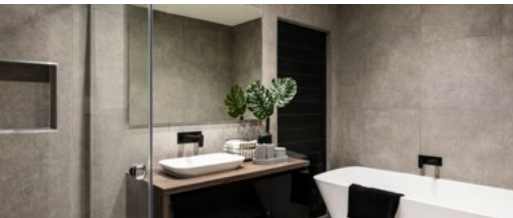
**YES** LED light frame



**YES** frame



**YES** printed



## PAGE 14 ICONIC mirror heating

**INDIVIDUAL DESIGN THROUGH PRINT MOTIF**



**YES** LED light frame



**NO** frame



**NO** printed



## PAGE 16 Decorative glass heating

**BLACK/WHITE (OPTIONAL CMYK COLORS) | WRITABLE**



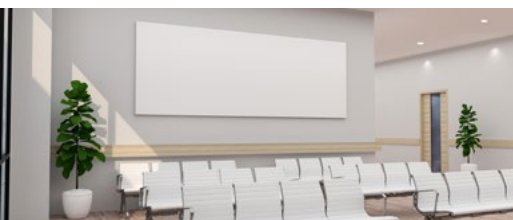
**YES** LED light frame



**YES** frame



**NO** printed



## PAGE 18 Smartline

**PRICE OPTIMISATION THROUGH MATERIAL ADJUSTMENT**



**YES** LED light frame

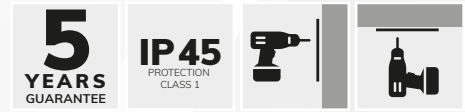


**NO** frame



**NO** printed

# ICONIC CLASSIC (FRAMELESS)



Elegant, simple and cost-effective. Our ICONIC Classic infrared heater impresses with its clear, simple design, its elegant finish and its slightly textured white surface.

With our ICONIC Classic, we offer you a cost-effective, highly effective infrared wall or ceiling heating for your living or business premises. The timeless white panels are suitable for any room and

can be mounted in portrait or landscape format, depending on your preference.

The ceiling installation option also allows you to install them in a particularly space-saving way, which makes them ideal for particularly small spaces such as closets, toilets or changing rooms.

Item Number	Model	Dimensions L   W   H mm	Nominal power W	Weight kg	Heatable area m <sup>2</sup>	Price Euro	Price CHF
115356	ICONIC Classic 250	600 x 300 x 21	200	4,4	3-6	€ 320,80	CHF 417.10
115357	ICONIC Classic 350	900 x 300 x 21	310	6,2	4-8	€ 399,20	CHF 518.90
115358	ICONIC Classic 420	600 x 600 x 21	350	8,2	6-11	€ 432,50	CHF 562.30
115359	ICONIC Classic 540	800 x 600 x 21	450	10,7	7-13	€ 512,50	CHF 666.30
115360	ICONIC Classic 750	900 x 700 x 21	600	13,9	11-18	€ 582,50	CHF 757.30
115361	ICONIC Classic 820	1700 x 400 x 21	710	15,1	12-20	€ 632,50	CHF 822.30
115362	ICONIC Classic 870	1195 x 595 x 21	730	15,5	12-21	€ 637,50	CHF 828.80
115363	ICONIC Classic 900	1000 x 800 x 21	780	17,0	13-22	€ 654,20	CHF 850.40
115364	ICONIC Classic 1200	1200 x 800 x 21	1000	21,0	17-29	€ 757,50	CHF 984.80
115365	ICONIC Classic 1250	1600 x 600 x 21	1000	21,0	18-30	€ 782,50	CHF 1 017.30



ICONIC Classic with ceiling installation







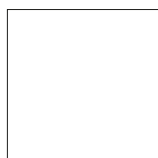
ICONIC Classic

## PERFORMANCE FEATURES

<b>Surface:</b>	Sheet steel, powder coated
<b>Backpan:</b>	Sheet steel, powder coated
<b>Surface temperature:</b>	approx. 90° C to 110° C
<b>Voltage:</b>	230 Volt, 50/60 Hz
<b>Color:</b>	Standard: white; any RAL color at extra charge
<b>Thermal protection:</b>	1-2 sensors, depending on the dimension of the heater
<b>Power plug/cable:</b>	Type CEE 7/7 angled, 8mm flat; cable length: 1.9 meters

## COLOR SELECTION

Our ICONIC Classic models are available in classic white as well as for a surcharge ([Item no. 115366](#) Price € 110,00 | CHF 143,00) also available in any other RAL color. Trend color examples: (Color deviations due to printing are possible.)



White



Yellow



Lilac



Grey blue



Ochre brown



Fawn



Coral



Crimson



Turquoise



Forest green



Pearl grey



Black

# ICONIC PICTURE HEATER

(FRAMED / FRAMELESS)



An ICONIC picture heater allows you to personalise your living space with a real design element. Our picture gallery and artotheque offer you a variety of motif options.

Item Number	Model	Dimensions L   W   H mm	Nominal power w	Weight kg	Heatable area m²	Price Euro	Price CHF
115367	ICONIC picture heater 250	600 x 300 x 21	200	4,5	3-6	€ 415,80	CHF 540.60
115368	ICONIC picture heater 350	900 x 300 x 21	310	6,4	4-8	€ 507,50	CHF 659.80
115369	ICONIC picture heater 420	600 x 600 x 21	350	8,2	6-11	€ 604,20	CHF 785.40
115370	ICONIC picture heater 540	800 x 600 x 21	450	10,7	7-13	€ 662,50	CHF 861.30
115371	ICONIC picture heater 750	900 x 700 x 21	600	13,7	11-18	€ 807,50	CHF 1 049.80
115372	ICONIC picture heater 820	1700 x 400 x 21	710	14,9	12-20	€ 845,80	CHF 1 099.60
115373	ICONIC picture heater 870	1195 x 595 x 21	730	15,5	12-21	€ 865,80	CHF 1 125.60
115374	ICONIC picture heater 900	1000 x 800 x 21	780	17,0	13-22	€ 899,20	CHF 1 168.90
115375	ICONIC picture heater 1200	1200 x 800 x 21	1000	20,5	17-29	€ 1 032,50	CHF 1 342.30
115376	ICONIC picture heater 1250	1600 x 600 x 21	1000	20,5	18-30	€ 1,082.50	CHF 1 407.30



ICONIC picture heater





ICONIC picture heater

## PERFORMANCE FEATURES

<b>Surface:</b>	ESG safety glass, smooth
<b>Backpan:</b>	Sheet steel, powder coated
<b>Surface temperature:</b>	approx. 90° C to 110° C
<b>Voltage:</b>	230 Volt, 50/60 Hz
<b>Color:</b>	printed
<b>Thermal protection:</b>	1-2 sensors, depending on the dimension of the heater
<b>Power plug/cable:</b>	Type CEE 7/7 angled, 8mm flat; cable length: 1.9 meters

## FRAME

Also available with frame for an additional charge. (exclusively for ICONIC picture, glass picture and decorative glass heaters).

**Item No.115444 AP-RA-S** Frame for panel sizes 600x300m,  
600x600m and 800x600mm

**Item No. 115445** Frame for panel sizes 900x700mm and larger

Price € 33,30 | CHF 43,20

Price € 41,60 | CHF 54,10



Silver Matt  
7004



Black Matt  
7021



Structure walnut  
7318



Gold shiny  
7001



Brushed  
Mercury  
7327

# ICONIC GLASS PICTURE HEATER

(FRAMED / FRAMELESS) Standard design frameless

**8**  
YEARS  
GUARANTEE

**IP45**  
PROTECTION  
CLASS 1



An ICONIC glass picture heater also sets individual design accents in your living or business space and fascinates with its glossy effect

made possible by the use of glass surfaces. In our picture gallery you will find a large selection of motifs specially chosen for you.

Item Number	Model	Dimensions L   W   H mm	Nominal power w	Weight kg	Heatable area m <sup>2</sup>	Price Euro	Price CHF
115377	ICONIC glass picture heater 250	600 x 300 x 21	200	4,5	3-6	€ 495,80	CHF 644.60
115378	ICONIC glass picture heater 350	900 x 300 x 21	310	6,4	4-8	€ 612,50	CHF 796.30
115379	ICONIC glass picture heater 420	600 x 600 x 21	350	8,2	6-11	€ 729,20	CHF 947.90
115380	ICONIC glass picture heater 540	800 x 600 x 21	450	10,7	7-13	€ 832,50	CHF 1 082.30
115381	ICONIC glass picture heater 750	900 x 700 x 21	600	13,7	11-18	€ 970,80	CHF 1 262.10
115382	ICONIC glass picture heater 820	1700 x 400 x 21	710	14,9	12-20	€ 1 020,80	CHF 1 327,10
115383	ICONIC glass picture heater 870	1195 x 595 x 21	730	15,5	12-21	€ 1 020,80	CHF 1 327,10
115384	ICONIC glass picture heater 900	1000 x 800 x 21	780	17,0	13-22	€ 1 057,50	CHF 1 374,80
115385	ICONIC glass picture heater 1200	1200 x 800 x 21	1000	20,5	17-29	€ 1 249,20	CHF 1 623,90
115386	ICONIC glass picture heater 1250	1600 x 600 x 21	1000	20,5	18-30	€ 1 287,50	CHF 1 673.80



ICONIC glass picture heating





ICONIC glass picture heating

## PERFORMANCE FEATURES

<b>Surface:</b>	ESG safety glass, smooth
<b>Backpan:</b>	Sheet steel, powder coated
<b>Application area:</b>	Direct heating
<b>Surface temperature:</b>	approx. 90° C to 110° C
<b>Voltage:</b>	230 Volt, 50/60 Hz
<b>Color:</b>	printed
<b>Thermal protection:</b>	1-2 sensors, depending on the dimension of the heater
<b>Power plug/cable:</b>	Type CEE 7/7 angled, 8mm flat; cable length: 1.9 meters

## FRAME

Also available with frame for an additional charge. (exclusively for ICONIC picture, glass picture and decorative glass heaters).

**Item No. 115444 AP-RA-S** Frame for panel sizes 600x300m, 600x600mm and 800x600mm

**Item No. 115445** Frame for panel sizes 900x700mm and larger

Price € 33,30 | CHF 43,20

Price € 41,60 | CHF 54,10



Silver Matt  
7004



Black Matt  
7021



Structure walnut  
7318



Gold shiny  
7001



Brushed  
Mercury  
7327

# ICONIC MIRROR HEATER (FRAMELESS)



Whether in the bathroom, as a wardrobe element or as a stylish bright spot on one of your walls, in its unobtrusive design the ICONIC mirror heater is an elegant option for room heating.

Item Number	Model	Dimensions L   W   H mm	Nominal power w	Weight kg	Heatable area m <sup>2</sup>	Price Euro	Price CHF
115387	ICONIC mirror heater 250	600 x 300 x 21	200	5,3	3-6	€ 415,80	CHF 540.60
115388	ICONIC mirror heater 350	900 x 300 x 21	310	7,6	4-8	€ 549,20	CHF 713.90
115389	ICONIC mirror heater 420	600 x 600 x 21	350	9,8	6-11	€ 607,50	CHF 789.80
115390	ICONIC mirror heater 540	800 x 600 x 21	450	12,9	7-13	€ 670,80	CHF 872.10
115391	ICONIC mirror heater 750	900 x 700 x 21	600	16,6	11-18	€ 807,50	CHF 1 049.80
115392	ICONIC mirror heater 820	1700 x 400 x 21	710	18,1	12-20	€ 832,50	CHF 1 082.30
115393	ICONIC mirror heater 870	1195 x 595 x 21	730	18,8	12-21	€ 845,80	CHF 1 099.60
115394	ICONIC mirror heater 900	1000 x 800 x 21	780	20,5	13-22	€ 879,20	CHF 1 142.90
115395	ICONIC mirror heater 1200	1200 x 800 x 21	1000	25,0	17-29	€ 999,20	CHF 1 298.90
115396	ICONIC mirror heater 1250	1600 x 600 x 21	1000	25,0	18-30	€ 1 015.80	CHF 1 320.60



ICONIC mirror heating





ICONIC mirror heating

## PERFORMANCE FEATURES

<b>Surface:</b>	ESG safety glass, smooth
<b>Backpan:</b>	Sheet steel, powder coated
<b>Application area:</b>	Direct heating
<b>Surface temperature:</b>	approx. 90° C to 110° C
<b>Voltage:</b>	230 Volt, 50/60 Hz
<b>Color:</b>	Mirror
<b>Thermal protection:</b>	1-2 sensors, depending on the dimension of the heater
<b>Power plug/cable:</b>	Type CEE 7/7 angled, 8mm flat; cable length: 1.9 meters

# ICONIC DECORATIVE GLASS HEATING

(FRAMED / FRAMELESS) Standard design frameless



Our ICONIC decorative glass heating line combines function with stylish, minimalist design. In addition to our two standard colors, any other glass color (CMYK colors) is also available for an additional

charge. As a panel heater, it is ideal for your kitchen, restaurant or office to note the current menu, purchases or business.

Item Number	Model	Dimensions L   W   H mm	Nominal power w	Weight kg	Heatable area m <sup>2</sup>	Price Euro	Price CHF
115397	ICONIC decorative glass heater 250	600 x 300 x 21	200	4,5	3-6	€ 379,20	CHF 492.90
115398	ICONIC Decorative glass heater 350	900 x 300 x 21	310	6,4	4-8	€ 457,50	CHF 594.80
115399	ICONIC decorative glass heater 420	600 x 600 x 21	350	8,2	6-11	€ 515,80	CHF 670.60
115400	ICONIC decorative glass heater 540	800 x 600 x 21	450	10,7	7-13	€ 565,80	CHF 735.60
115401	ICONIC decorative glass heater 750	900 x 700 x 21	600	13,7	11-18	€ 674,20	CHF 876.40
115402	ICONIC decorative glass heater 820	1700 x 400 x 21	710	14,9	12-20	€ 730,80	CHF 950.10
115403	ICONIC decorative glass heater 870	1195 x 595 x 21	730	15,5	12-21	€ 740,80	CHF 963.10
115404	ICONIC Decorative glass heater 900	1000 x 800 x 21	780	17,0	13-22	€ 782,50	CHF 1 017.30
115405	ICONIC Decorative glass heater 1200	1200 x 800 x 21	1000	20,5	17-29	€ 907,50	CHF 1 179,80
115406	ICONIC Decorative glass heater 1250	1600 x 600 x 21	1000	20,5	18-30	€ 932,50	CHF 1 212.30



ICONIC decorative glass heater

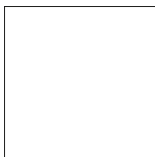




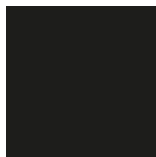


## PERFORMANCE FEATURES

<b>Surface:</b>	ESG safety glass, smooth
<b>Backpan:</b>	Sheet steel, powder coated
<b>Application area:</b>	Direct heating
<b>Surface temperature:</b>	Approx. 90° C to 110° C
<b>Voltage:</b>	230 Volt, 50/60 Hz
<b>Color:</b>	white, black
<b>Thermal protection:</b>	1-2 sensors, depending on the dimension of the heater
<b>Power plug/cable:</b>	Type CEE 7/7 angled, 8mm flat; cable length: 1.9 meters



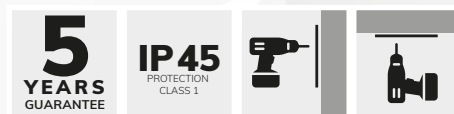
White



Black

(Color deviations are possible due to printing. Please see page 13 for possible frames)

# SMARTLINE



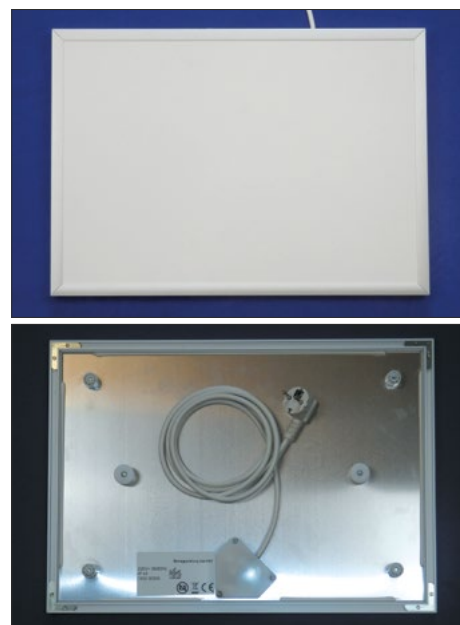
This series focuses primarily on offering the best possible heating quality at the lowest price. The biggest difference between the ICONIC and SMARTLINE series is the mechanical construction of the panels. By using different materials, we are able to lower the price of the SmartLine without having to accept significant reductions in heating and panel quality. Both series are therefore designed for indoor use and also meet the requirements for use in bathrooms and for ceiling installation.

The mechanical stability of the ICONIC series is mainly achieved by the high-quality sheet metal edges. In the SMARTLINE series, this is achieved by the frame and the additional suspension points. The thermal insulation between the front and rear of the SMARTLINE series is provided by a thin air cushion and an IR reflector, while the ICONIC series uses an insulating body.

Item Number	Model	Dimensions L   W   H mm	Nominal power w	Weight kg	Heatable area m <sup>2</sup>	Price Euro	Price CHF
115421	SmartLine 175	495 x 350 x 16	170	2,35	2-5	€ 257,50	CHF 334.80
115422	SmartLine 320	595 x 595 x 16	320	4,3	4-8	€ 304,20	CHF 395.40
115423	SmartLine 520	950 x 615 x 16	520	6,75	8-12	€ 437,50	CHF 568.80
115424	SmartLine 700	1100 x 650 x 16	700	8,2	11-19	€ 479,20	CHF 622.90
115425	SmartLine 1000	1240 x 815 x 16	1000	11,2	16-24	€ 545,80	CHF 709.60

## PERFORMANCE FEATURES

<b>Surface:</b>	Sheet steel, powder coated
<b>Backpan:</b>	Aluminium, untreated
<b>Application area:</b>	Direct heating
<b>Surface temperature:</b>	approx. 90° C to 110° C
<b>Voltage:</b>	230 Volt, 50/60 Hz
<b>CRI:</b>	>92
<b>Color:</b>	white, with frame in white or silver
<b>Thermal protection:</b>	1-2 sensors, depending on dimension of the heater
<b>Power plug/cable:</b>	Type CEE 7/7 angled, 8mm flat Cable length: 1.9 meters
<b>Warranty:</b>	5 years heater, 2 years LED light frames & controls



## CONTROL SYSTEMS

Thermostats and actuators are available for controlling your SmartLine panels. These can be found on page 32 and 33.



## Detail pictures SmartLine Panels - frame silver/white



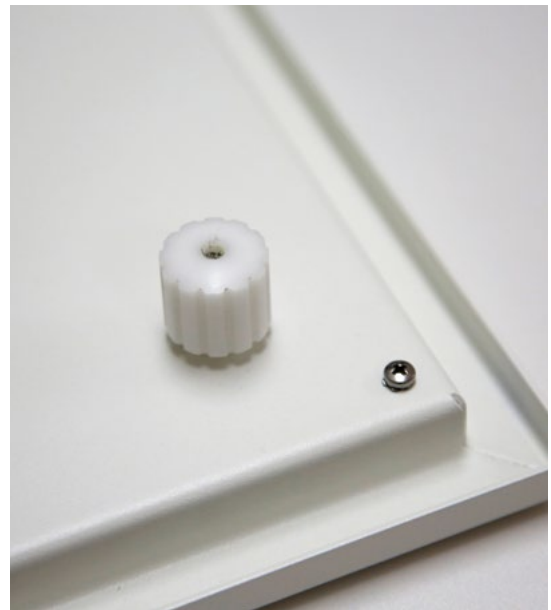
### SmartLine light frame (dimmable against surcharge)

Item Number	Model	Dimensions L   W   H mm	Nominal power w	Lumen lm	Price Euro	Price CHF
115426	SmartLine 175	495 x 350 x 16	28	2.200	€ 249,20	CHF 323.90
115427	SmartLine 320	595 x 595 x 16	38	3.100	€ 257,50	CHF 334.80
115428	SmartLine 520	950 x 615 x 16	49	4.000	€ 307,50	CHF 399.80
115429	SmartLine 700	1100 x 650 x 16	55	4.600	€ 374,20	CHF 486.40
115430	SmartLine 1000	1240 x 815 x 16	64	5.400	€ 399,20	CHF 518.90
115417	LED Wireless PWM Controller MiniAMP	-	-	-	€ 41,60	CHF 54.10

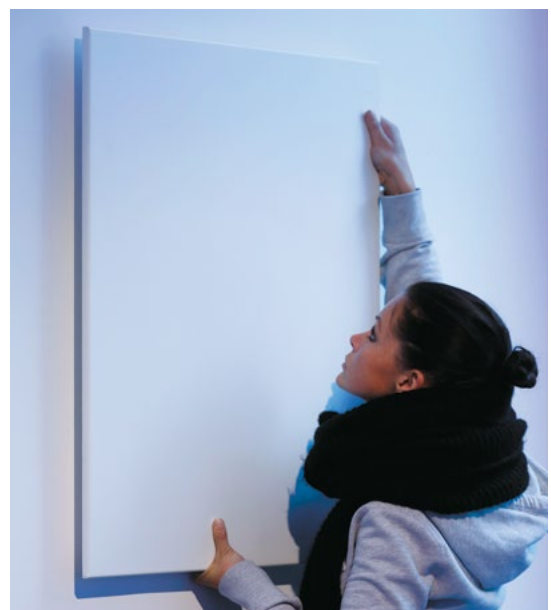
# MOUNTING SYSTEM

Our ICONIC infrared heaters can be installed quickly and without the help of a professional in no time at all - without any chiselling or pipe laying. Thanks to our unique mounting system, you simply mount our

panels on the wall like a picture and connect them to the nearest socket. Our supplied assembly instructions will guide you step by step.



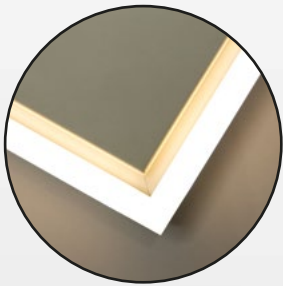
The standard included in delivery mounting system with spacer to fix the panel to the wall ...



... allows an easy and quick mounting of your ICONIC infrared heater.

# ACCESSORIES

---



**LED LIGHT FRAME**



**TOWEL RACK  
BRACKET**



**PEDESTAL**

# ICONIC HEAT & LIGHT LIGHT FRAME

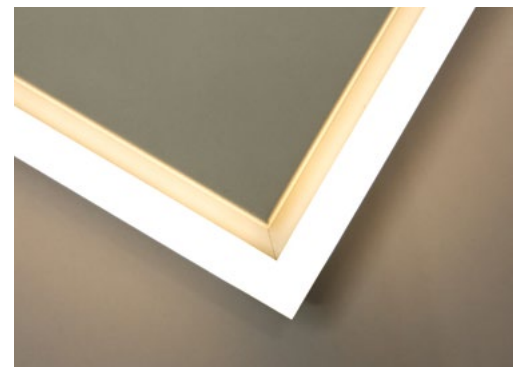


The ICONIC Heat & Light illuminated frame combines the advantages of our ICONIC infrared heaters with the latest LED technology. Available as a chic advanced model with dimming function and high lumen output, our Heat & Light illuminated frame also brings a pleasant lighting atmosphere into your comfortably warm, heated rooms. The light function can of course also be used independently of the heating function. Due to the innovative

construction of our design, which does not negatively affect the operation of the LED light strip, i.e. the heat does not directly hit the profile of the light strip, the service life of the installed LED board is not reduced. The ICONIC Heat & Light frame is suitable for all ICONIC models. The installation of the heating panel including the light frame with extension set is carried out by a qualified electrician.

## PERFORMANCE FEATURES

- Material Profile:** Anodised aluminium
- Material cover:** Plastic opal white
- Voltage LED:** 24 Volt, DC
- Voltage transformer:** 230 Volt, 50/60 Hz
- CRI:** >92
- Light temperature:** 3,000 Kelvin  
For a surcharge the advanced model can be delivered with a color temperature of 6,500 Kelvin.
- Warranty:** 8 years heating, 2 years LED light frames & controls



ICONIC Heat & Light illuminated frame





ICONIC Heat & Light illuminated frame

Item Number	Model <b>ADVANCED</b> dimmable	Dimensions L   W   H mm	Nominal power w	Lumen lm	Price Euro	Price CHF
<b>115407</b>	ICONIC Heat & Light Advanced 250	657 x 357 x 24	27,0	3.100	€ 257,50	CHF 334.80
<b>115408</b>	ICONIC Heat & Light Advanced 350	957 x 357 x 24	36,0	4.000	€ 274,20	CHF 356.40
<b>115409</b>	ICONIC Heat & Light Advanced 420	657 x 657 x 24	36,0	4.000	€ 274,20	CHF 356.40
<b>115410</b>	ICONIC Heat & Light Advanced 540	857 x 657 x 24	42,0	4.700	€ 315,80	CHF 410.60
<b>115411</b>	ICONIC Heat & Light Advanced 750	957 x 757 x 24	48,0	5.300	€ 324,20	CHF 421.40
<b>115412</b>	ICONIC Heat & Light Advanced 820	1757 x 457 x 24	63,0	6.900	€ 474,20	CHF 616.40
<b>115413</b>	ICONIC Heat & Light Advanced 870	1252 x 652 x 24	54,0	5.900	€ 390,80	CHF 508.10
<b>115414</b>	ICONIC Heat & Light Advanced 900	1057 x 857 x 24	54,0	5.900	€ 390,80	CHF 508.10
<b>115415</b>	ICONIC Heat & Light Advanced 1200	1257 x 857 x 24	60,0	6.600	€ 399,20	CHF 518.90
<b>115416</b>	ICONIC Heat & Light Advanced 1250	1657 x 657 x 24	66,0	7.400	€ 482,50	CHF 627.30
<b>115417</b>	LED Wireless PWM Controller MiniAMP	-	-	-	€ 41,60	CHF 54.10
<b>115447</b>	Extension set consisting of 2 x Aluminium bracket and 4 x distance bolts	-	-	-	€ 33,30	CHF 43.20
<b>115418</b>	Surcharge color temperature 6500K	-	-	-	€ 24,90	CHF 32.40

# ASSEMBLY LED LIGHT FRAME

The infrared panel must be mounted with the spacers supplied as accessories. The 220 V connection of the infrared panel and the LED transformer must be made by an electrician.



1. Attach the LED light frame to the IR panel.
2. Push up to white spacer.
3. Swivel up the LED light frame.

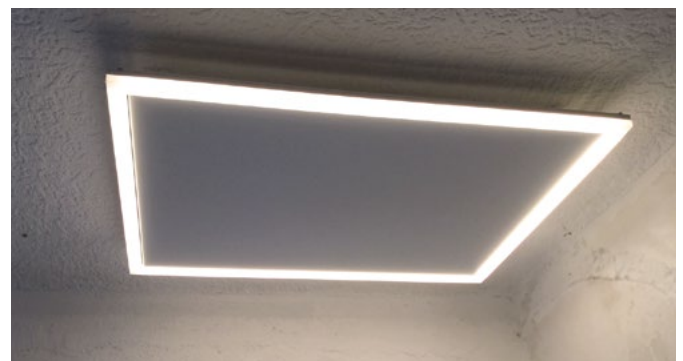


4. Lift up the rear, protruding part of the LED light frame until the metal supports are level with the top of the IR panel. Then push the protruding LED light frame towards the front of the IR panel until it is in contact.



5. All corners of the LED frame now lie evenly on the IR panel. (For the ICONIC series and Smartline, the LED frame can optionally be reduced from approx. 10 mm to approx. 5 mm protrusion with the infrared panel underside using four magnets that are included in the delivery. The magnets are then placed under the corner supports of the LED frame. Fig. 5.1.)  
For longer frames >1300 mm, a middle bracket with the swiveling bracket prevents sagging.

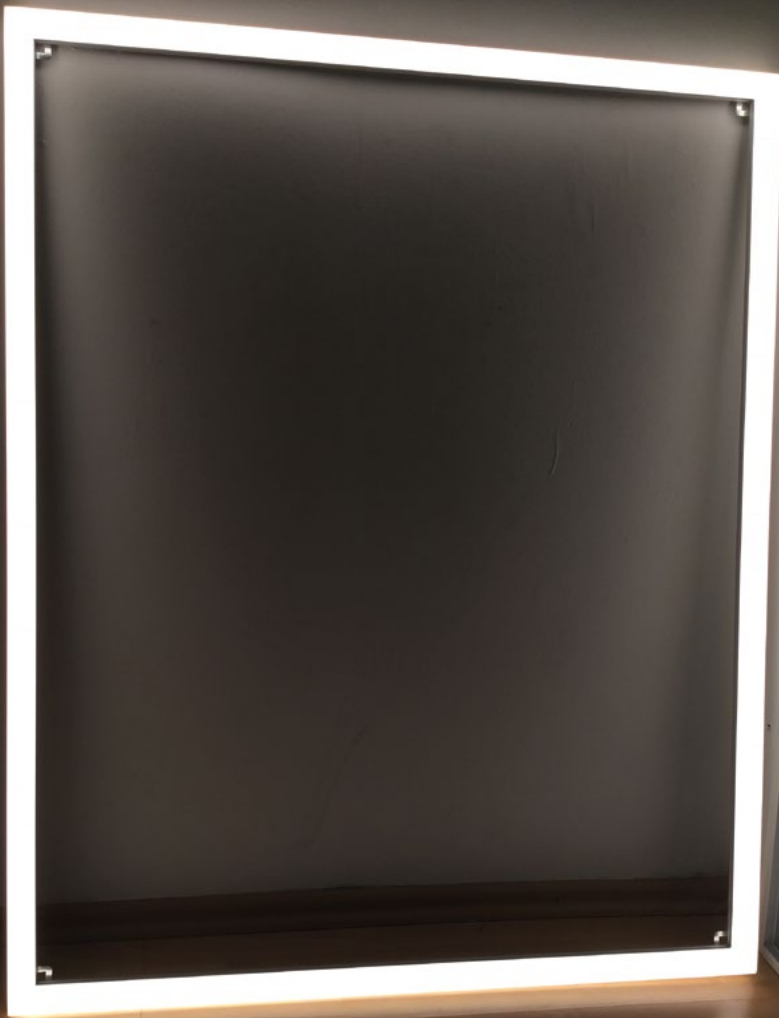
6. Connect the 24 V connection cable of the LED light frame with the 24 V plug of the transformer.







ICONIC panel with illuminated frame



LED light frame



SMARTLINE panel with light frame

# ICONIC TOWEL DRYERS / BATHROOM HEATERS

**2**  
YEARS  
GUARANTEE

The ICONIC towel dryer warms your bathroom as a bathroom heater and in its function as a towel holder also your bath towel. We are pleased to offer you for the first time the possibility to choose any of our models and therefore any of our motifs as towel dryer. Choose

any ICONIC infrared heater (in portrait format) and simply order it as an infrared towel rail including our shapely, high-quality aluminium mounting bracket.



Rail with two brackets  
Mounting directly on the panel  
**Item No. 115419**    **Price € 165.80 | CHF 215.60**



Brushed stainless steel bracket  
Mounting on the wall next to the panel  
**Item No. 115420**    **Price € 58.30 | CHF 75.70**

## PERFORMANCE FEATURES

According to the ICONIC model you have chosen. Can only be mounted vertically.

# ICONIC FEET

You don't want to mount your heating panel on the wall, but use it as a mobile stand model and place it anywhere in the room? Then our high-quality feet in exclusive design are just the thing for you!

**Item No. 115446**    **Price € 83.30 | CHF 108.20**





# PICTURE GALLERY



**BASE | 123RF.DE**



**ART**



**INDIVIDUAL MOTIF**

Functionality and design - ISOLED® convinces through individuality, not only in the technical efficiency of its products, but also in terms of design possibilities. With our high-quality image motifs specially selected for you, you can design your living or business space entirely according to your personal ideas.

Be inspired by our image gallery and choose your free motif from it. Please simply tell us the corresponding motif number in the initial consultation or when ordering. You will find further printable motifs on 123rf.de (for an additional charge/ [article no. 115442 price € 66,70 | CHF 86,70](#)). Here too, please simply let us know the corresponding image number.

Our cooperation with Artothek, a picture archive with a focus on painting, which also cooperates with numerous renowned domestic and foreign museums, allows us access to a large number of works by world-famous artists, which we are also happy to bring into your living space. It includes works by important painters such as Picasso, Klimt, Monet and Schiele, but also by less renowned, although equally extremely talented artists. All motifs can be found at [www.artothek.de](http://www.artothek.de) (for an additional charge/ [article no. 115443 price € 83,30 | CHF 108,30](#)).

If you prefer a personal image, company logo or any other motif of your own, you are also welcome to use our Personal Printing Service - a unique variety of design options awaits you.

## Personal printing - design your own panel

A memory of a beautiful moment or of dear people, captured photographically, the romantic sunset from your last holiday - we also offer you the possibility of having your very personal motif printed on one of our high-quality infrared picture heaters.

Company logos, lettering or graphics are further possibilities for a personalized appearance. The optimum print resolution is 300dpi in panel size. You should only choose motifs for which you also have a corresponding usage license.



**INCLUDED  
IN THE  
PRICE**

## Skylines



11798310



4428450



14361043



8338065



16148424

## Nature



7187055



23250630



12194212



6730913



12569040

## Silence



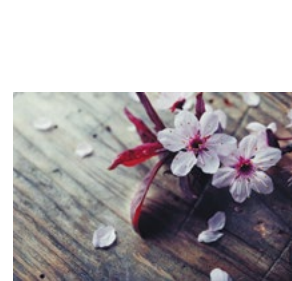
10996534



8080811



12290792



13571777



14777146

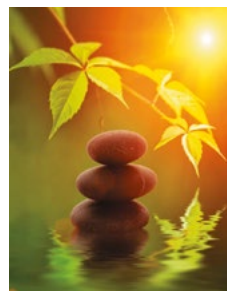
## Zen



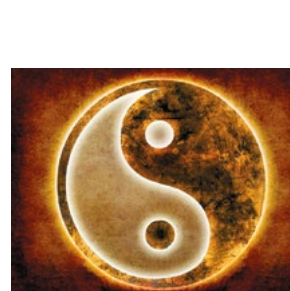
14773563



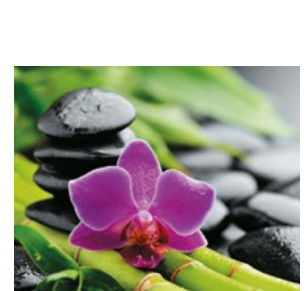
14889391



5165571



12720600



13307999

## Landscapes



49058016



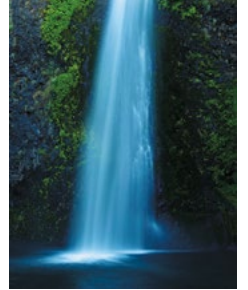
9259901



8120260



13751488



15544205



15091371



4762522



10035934



15541169



7414443

## Impressions



13910123



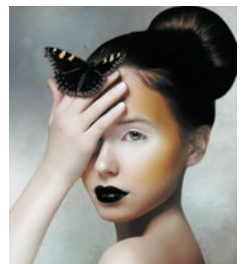
11582390



18591815



36952386



17664469

## Design



7599687



7297291



3617038



2481900



11808015

## Flowers



13649031



10903214



3509257



15273155



13299192



12774590



8952443



24954870



4520931

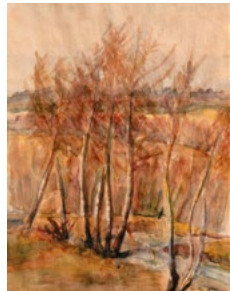
## Paintings & Abstract



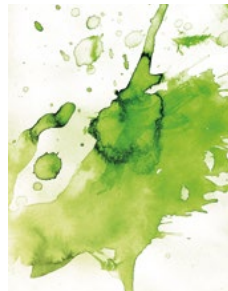
7600753



14394465



23474184



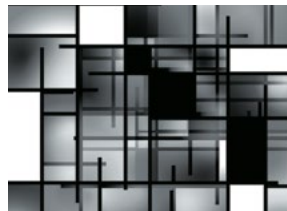
11474118



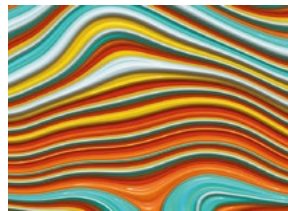
13408360



30574540



6850970



8026311



6796765

The image section may vary depending on the size of the heater you have chosen. Color deviations are possible due to the print.



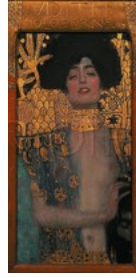
**Artothek**



Tour Eiffel  
Robert De-  
launay



Concentrated novel  
Paul Klee



Judith with the head  
of Holofernes  
Gustav Klimt



Two women from Tahiti  
Paul Gauguin

**SURCHARGE  
PRO MOTIVES  
& PANEL  
ITEM NO. AP-  
ART**



Calendar illustration  
Alfons Mucha



Blanche Hoschede painting  
Claude Monet



Back to Earth  
Catrin Welz-Stein



Bouquet of gladioli, lilies  
& daisies  
Claude Monet



The kiss  
Gustav Klimt



Still life with fruits  
Paul Cézanne



Woman holding a fruit  
Paul Gauguin



Stables  
Franz Marc



Young hare  
Albrecht Dürer



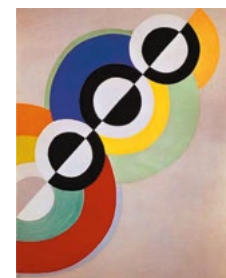
Mona Lisa  
Leonardo da  
Vinci



Flora on the rock  
Paul Klee



Evening  
Alexej von Ja-  
wlensky



Prisms  
Robert Delaunay



Sunflowers  
Egon Schiele



Female model  
Egon Schiele



Summer dream  
Catrin Welz-Stein



Blue horses  
Franz Marc



Le Café, le soir  
Vincent van Gogh

# CONTROL SYSTEMS

**2**  
YEARS  
GUARANTEE

## Room thermostat (radio)

The room thermostat is used for temperature-dependent switching of electrical heating systems in single-family houses, apartments and offices. The room thermostat is a digital radio thermostat with green LCD backlight. The main advantage of the room thermostat is its simple and flexible installation - without power supply unit and cable. The room thermostat can operate up to 9 receivers / switching elements.

### Advantages of the room thermostat:

- 7 weekly programs / 6 temperature changes per day
- Simple and flexible installation - without power supply unit and cable
- Rapid change of the required temperature
- Information about operating hours / child safety lock / key lock
- Individual programming by days from Mo-Fr, Sa-Su and Mo-Su are possible
- Frost protection (3 °C) / warning message for weakening battery
- Range up to 35 m

Item No. 115437

Price € 41.60 | CHF 54.10



## Room thermostat with rotary knob (radio)

The room thermostat with rotary knob allows you to intuitively set the temperature by turning the control wheel.

Item No. 115438

Price € 41.60 | CHF 54.10



## Switch actuator flush-mounted

The flush-mounted switch actuator switches the connected heating panel off or on based on the data transmitted by the radio thermostat. The main advantage is the possible mounting in a flush-mounted box behind the panel.

Item No. 115439

Price € 41.60 | CHF 54.10



## Switch actuator Intermediate plug

The switch actuator adapter plug switches the connected heating panel off or on based on the data transmitted by the radio thermostat. Is plugged directly into the socket.

Item No. 115440

Price € 41.60 | CHF 54.10



## Plug-in thermostat TS 10

The TS 10 plug-in thermostat brings new comfort to the control of your infrared heating. In addition to temperature control, you also have the option here to activate a time program. The plug-in thermostat is characterised by an extremely good price-performance ratio.

Item No. 115441

Price € 33.30 | CHF 43.20







## HomeMatic Smart Home IP Central CCU3

The HomeMatic central control unit is the heart of the automated control of your infrared heaters. This innovative device is the base of your user-friendly home control system through which all additional components communicate with each other. It is programmed simply and intuitively via your PC. The latest version CCU3 not only offers higher processing speeds and more memory, but also the integration of additional systems via additional software or plug-ins is now possible.

Item No. 115431

Price € 332.50 | CHF 432.30



## HomeMatic IP wall thermostat

To achieve the perfect feel-good temperature in every room, it's best to use our HomeMatic wall thermostats. With the HomeMatic wall thermostat you can regulate each room in your living area individually, from the comfortably warm living room to the pleasantly cool bedroom. Simply install a separate HomeMatic wall thermostat in each room and set your desired temperature.

Item No. 115432

Price € 74.90 | CHF 97.40



## HomeMatic IP switchable socket outlet 16A, surface-mounted

The HomeMatic IP switchable socket serves as an adapter between the socket and the heating panel. Attached with a simple flick of the wrist, it instantly connects your infrared heaters to your user-friendly HomeMatic control system. The switch socket can also optionally be used as a repeater (radio signal amplifier) between the control panel and additional devices.

Item No. 115433

Price € 62.40 | CHF 81.10



## HomeMatic IP Switching/measuring actuator 5A/16A, flush-mounted

With the HomeMatic flush-mounted switching actuator you can easily integrate your heating panels into your HomeMatic control system via radio. The flush-mounted switch actuator is simply connected directly to the circuit behind your heating panel. The device is available in two versions, 5A and 16A.

Item No. 115435/115434

Price € 74.90 / € 83.30 | CHF 97.40 / CHF 108.20



## HomeMatic IP window and door contact

The HomeMatic IP window and door contact automatically detects when windows and doors open in the room and consequently lowers the heating temperature to prevent unnecessary heating losses. The contact can also be used as an alarm to provide even more security in your home.

Item No. 115436

Price € 45.80 | CHF 59.50

## HomeMatic control via smartphone, tablet and PC

For even greater convenience, it is also possible to control all components of your HomeMatic system simply and easily via the HomeMatic remote control app for smartphone, tablet and PC. With this handy app you can switch your panels on and off, adjust temperature settings remotely and monitor your room temperature - wherever and whenever you want.

**ATTENTION:** The HomeMatic remote control is subject to a charge. The price is set by HomeMatic and cannot be influenced by us.

\* The following costs will be incurred for the HomeMatic controller from the second year onwards:

CloudMatic Connect  
CloudMatic Complete

Minimum requirement for access via WebUI  
including access via smartphone app

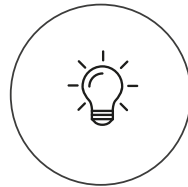
# CUSTOMISED LIGHT SOLUTIONS

SUSTAINABLE EFFICIENCY IMPROVEMENT  
WITH SMART LED LIGHTING CONCEPTS



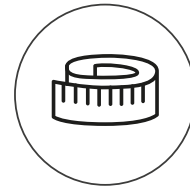
## STANDARDIZED PRODUCT RANGE

More than 2,450 products  
High-end LED components  
High product availability



## INTELLIGENT PROJECT LIGHTING SOLUTIONS

Scalable LED control technology  
Holistic LED lighting systems  
Personal project support



## CUSTOMER-SPECIFIC MANUFACTURE

Manufactured light elements  
Precise custom production  
Delivery ready for installation

## PRODUCT CATALOGS ISOLED® 2022



### 4 subject-specific catalogs

- » 1008 pages full of highlights
- » 35.000 pieces Circulation
- » Available in: DE, EN, FR, IT & HU
- » Online flip catalog and high quality print version

### Choose from over 2,450 items!

- » Innovative LED brand products
- » Over 120 product categories
- » Sustainable, intelligent lighting solutions
- » Individual lighting concepts
- » Manufactured light elements
- » Special designs and OEM production

**We advise you personally and support you with the realisation of your projects!**

# LEGEND



Protection against dust deposits inside as well as against splashing water from all directions and therefore also suitable for use in the bathroom.



Suitable for ceiling mounting.



Suitable for ceiling mounting.

## WARRANTY AND CERTIFICATES

Our guarantee and our numerous certificates testify to our quality, the efficiency of our products and the safety for people and the environment. With an ICONIC infrared heater, you acquire a unique, outstanding product in terms of technology and design.



Our infrared heaters are manufactured exclusively in Austria under the highest quality standards. We only use tested and high-quality materials for our production. All glass and mirror elements are made of tempered safety glass (ESG), which minimizes the risk of injury in case of breakage.



The CE marking ("Conformité Européenne") is a marking according to EU law for certain products and indicates that the product complies with the requirements of the respective applicable European directives.



We guarantee that Heat4All ICONIC heating panels do not contain any substances prohibited by the RoHS Directive in concentrations above the limit values.



ISO 9001 : 2015



EAC is an abbreviation for Eurasian Conformity. The EAC certificate certifies that the products comply with the technical regulations of the Eurasian Economic Union. The certification and quality assurance of the products is carried out by the respective certification body.



The UL-MX Mark is a safety mark registered and provided by UL de Mexico, SA de CV



Warranty length of the individual articles

**NET PRICE ITEM**

**No further discount possible**

Status: July 2021 | Please take the currently valid prices from our online shop.

**Legal notice / Photo credits All rights reserved by FIAI Handels GmbH.**

**Imprint:** This catalogue is produced and published by ISOLED® | FIAI Handels GmbH in Egerbach 48, A-6334 Schwoich, AUSTRIA

**Company register number** FN304126w | UID number: ATU63995500

Please note that all our products and services are offered exclusively in accordance with our terms and conditions and warranty conditions. You can download these from our homepage.

**Datasheets and other technical information can be found on our homepage at [www.isoled.at](http://www.isoled.at) / [de](http://www.isoled.de) / [ch](http://www.isoled.ch) / [hu](http://www.isoled.hu) / [it](http://www.isoled.it) / [fr](http://www.isoled.fr).**

**Please note:** technical details in this catalogue correspond to the status as at the time of printing and have been compiled based on our best knowledge. Nevertheless, we reserve the right for there to be errors and misprints. The details are provided for more detailed description of items, however are not warranted properties, unless expressly described as such. / The items contained in this catalogue may be discontinued at any time by ISOLED® without replacement. / Changes for the benefit of technical progress or adjustments to modified standards or regulations remain reserved. / Photos and drawings in this catalogue are examples and are not binding for supply. / FIAI GmbH accepts no liability for any non-availability of the catalogue products. / FIAI Handels GmbH also is not liable for any direct, indirect, coincidental or other damages (including but not limited to lost profits, lost earnings or similar financial damages), which result from the use of information in this catalogue. / Breaches of legal rights or the use of text and layout design (inc. photos) are not permitted without our permission and will be subject to legal action. / The presentation of our products is enabled through the cooperation with and permission of the owners of the environments which can be seen in the foreground of each image. We would like to express our gratitude for this..

Version 07/2021

**ISOLED® Austria Technology and Logistics Center**

FIAI Handels GmbH | Egerbach 48 | A-6334 Schwoich | Tel: +43 5372 219999 | E-Mail: [office@isoled.at](mailto:office@isoled.at)

ISOLED® AUSTRIA  
[www.isoled.at](http://www.isoled.at)

ISOLED® GERMANY  
[www.isoled.de](http://www.isoled.de)

ISOLED® SWITZERLAND  
[www.isoled.ch](http://www.isoled.ch)

ISOLED® FRANCE  
[www.isoled.fr](http://www.isoled.fr)

ISOLED® ITALIA  
[www.isoled.it](http://www.isoled.it)

ISOLED® HUNGARIA  
[www.isoled.hu](http://www.isoled.hu)

# YOUR PARTNER

ISOLED® SINCE 2008



**ISOLED® AUSTRIA**  
FIAI Handels GmbH  
Egerbach 48  
A-6334 SCHWOICH  
AUSTRIA

Tel: +43 5372 219 999

Email: [office@isoled.at](mailto:office@isoled.at)  
[www.isoled.at](http://www.isoled.at)



**ISOLED® GERMANY**  
FIAI Trading GmbH  
Hollerweg 3  
D-85649 BRUNNTHAL  
GERMANY

Tel: +49 810 48 999 200

Email: [office@isoled.at](mailto:office@isoled.at)  
[www.isoled.de](http://www.isoled.de)



**ISOLED® SWITZERLAND**  
Allegra Swiss GmbH  
Einsiedlerstrasse 15a  
CH-8834 SCHINDELLEGI  
SWITZERLAND

Tel: +41 44 787 04 75

Email: [info@isoled.ch](mailto:info@isoled.ch)  
[www.isoled.ch](http://www.isoled.ch)

# 99 %

**of our customers and partners  
recommend ISOLED® !**

**YOUR QUALITY REQUIREMENTS ARE OUR BENCHMARK!**