

26682 ASTEN LED IP44 15W-NW

Wall-mounted LED light fitting, IP44

5905339266828



Kanlux ASTEN LED is a linear wall luminaire to be used in places with increased humidity (IP44). You can easily mount it above the bathroom mirror. The lamp has a built-in light source based on SMD LED diodes, which lifetime is at least 25,000 hours.

GENERAL DATA:

Colour: white / chrome

Place of assembly: wall mounted

Place of application: Indoors

Minimum distance from the illuminated object: 0,1m

Compatible with a dimmer: no

Replaceable light source: no

Fixture lighting direction: down

Length [mm]: 900

Width [mm]: 110

Height [mm]: 41

Integrated LED light source: yes

TECHNICAL DATA:

Rated voltage [V]: 220-240 AC

Rated frequency [Hz]: 50/60

Maximum power [W]: 15

Class of protection against electric shock: II

Lampshade material: plastic

Diode type: LED SMD

Luminous flux [lm]: 970

Colour temperature: white

Colour temperature [K]: 4000

Colour uniformity [SDCM]: ≤6

Colour-rendering index Ra: ≥80

Service life [h]: 25000

Number of on/off cycles: ≥15000

Luminous efficiency of the lamp [lm/W]: 65

Ambient temperature range to which the product can be exposed: 5÷30

Enclosure material: aluminum alloy

Connection type: Bolt terminal block

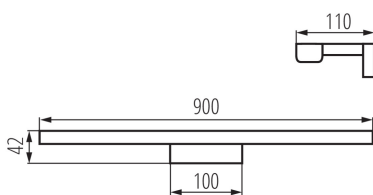
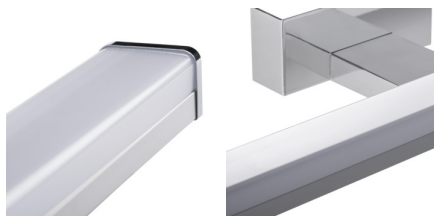
Range of sections of wires used [mm²]: 0,75÷1,5

The fixture set includes built-in LED's with the following energy classes: A++,A+,A

Lamp-heating time [s]: ≤1

Lamp-ignition time [s]: ≤0,5

IP class: 44



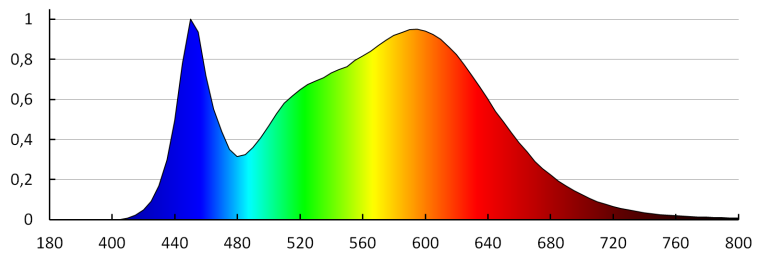
26682 ASTEN LED IP44 15W-NW

Wall-mounted LED light fitting, IP44



LOGISTIC DATA:

Unit of measurement: unit
Packaging method: 10
Number of units in the secondary packaging: 1
Number of units in the packaging: 10
Net unit weight [g]: 370
Grammage [g]: 675
Length of a unit pack [cm]: 13
Width of a unit pack [cm]: 5
Height of a unit pack [cm]: 91
Weight of a cardboard box [kg]: 6.75
Width of a cardboard box [cm]: 28
Height of a cardboard box [cm]: 27.5
Length of a cardboard box [cm]: 93
Volume of a cardboard box [m³]: 0.07161



KANLUX S.A. (kat 26682) ASTEN LED IP44-15W-NW / Krzywa rozsyłu światła (biegunowo)

Oprawa: KANLUX S.A. (kat 26682) ASTEN LED IP44-15W-NW
Lampy: 1 x ASTEN LED IP44-15W-NW

