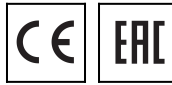
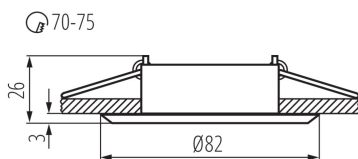
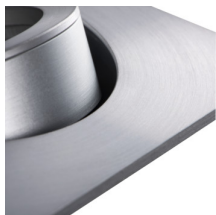


18561 EVIT CT-DTO50-AL

Ceiling-mounted spotlight fitting

5905339185617



Kanlux EVIT is a spot-beam holder made of aluminium. It has a possibility of adjusting the direction of light. Kanlux EVIT is a classic eye without ornaments.

GENERAL DATA:

Colour: aluminium
Necessity of using self-shielding lamps: yes
Place of assembly: Recessed mount in the ceiling
Place of application: Indoors
Minimum distance from the illuminated object: 0,5m
Replaceable light source: yes
The product is not suitable to be installed on a normally flammable surface: >35W
The product is not suitable to be covered with a heat-insulating material: yes
Light source included: no
Height [mm]: 26
Diameter [mm]: 82
Assembly hole [mm]: Ø70-75
Wire length [m]: 0.12

TECHNICAL DATA:

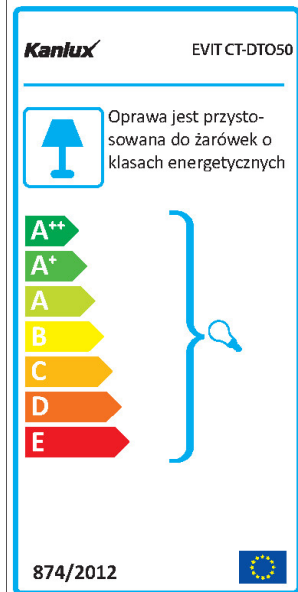
Rated voltage [V]: 12 AC; 12 DC
Maximum power [W]: max 50
Class of protection against electric shock: III
Light source: MR16
Cap: Gx5,3
Ambient temperature range to which the product can be exposed: 5÷25
The fixture is adapted to the light sources of the following energy classes: A++,A+,A,B,C,D,E
Enclosure material: aluminum alloy
Connection type: Free cable ends
Wire diameter [mm²]: 0.75
Lighting-fixture angle regulation: in one axis
Lighting-fixture angle regulation [°]: 30
IP class: 20

LOGISTIC DATA:

Unit of measurement: unit
Packaging method: 50
Number of units in the secondary packaging: 1
Number of units in the packaging: 50
Net unit weight [g]: 76
Grammage [g]: 105

18561 EVIT CT-DTO50-AL

Ceiling-mounted spotlight fitting



Length of a unit pack [cm]: 8.5

Width of a unit pack [cm]: 4

Height of a unit pack [cm]: 8.5

Weight of a cardboard box [kg]: 5.25

Width of a cardboard box [cm]: 22.5

Height of a cardboard box [cm]: 19

Length of a cardboard box [cm]: 45

Volume of a cardboard box [m³]: 0.019238

